



UpstateSCAlliance



33

passenger vehicle OEMs  
within a day's drive



250+

automotive-related  
companies



#2

automotive exporter  
in the U.S. by value  
*South Carolina*



2,303

manufacturers



579

international  
companies



375

robotics & automation  
companies

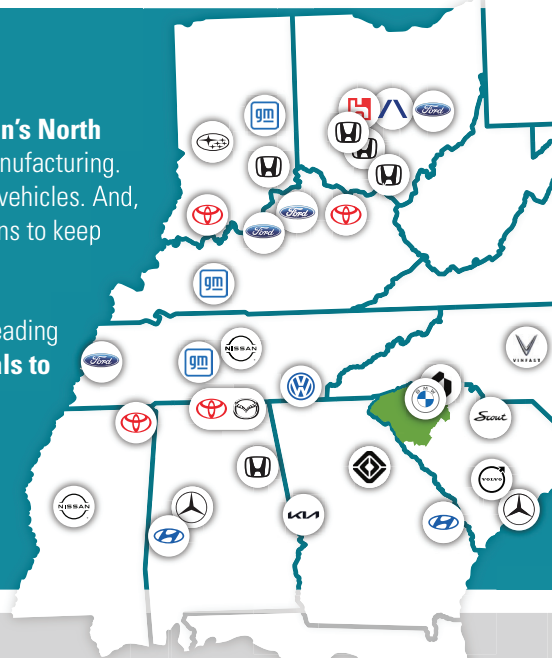


### *Driving the future of mobility.*

Home to **BMW's** largest vehicle production facility. **Michelin's North American** headquarters, research, development and tire manufacturing. **Oshkosh Defense's** production of next-generation delivery vehicles. And, technology firms like **AWL** that are providing process solutions to keep industry at peak productivity.

More than a production powerhouse, the Upstate region is leading the charge on mobility innovation. From **composite materials to alternative fuel sources to autonomous systems**, collaborative research driven by corporate partnerships is accelerating change in the automotive industry.

It's all happening in the Upstate.



### **TALENT** *with drive*

Automotive employment  
concentration

6x

national average

Engineering  
technician  
concentration

1.5x

national  
average

Industrial  
engineering  
concentration

2.4x

national  
average

“

One of the best things we experienced here is the Spark Center SC, which helped us get a temporary office, address & mailing services. Now, having Spartanburg Community College right around the corner supplying us with technical scholar students, mechanics, mechatronics & programmers is a great help for us to develop our talent inside our company.

**Per Blohm**

FORMER GENERAL MANAGER USA, AWL AUTOMATION

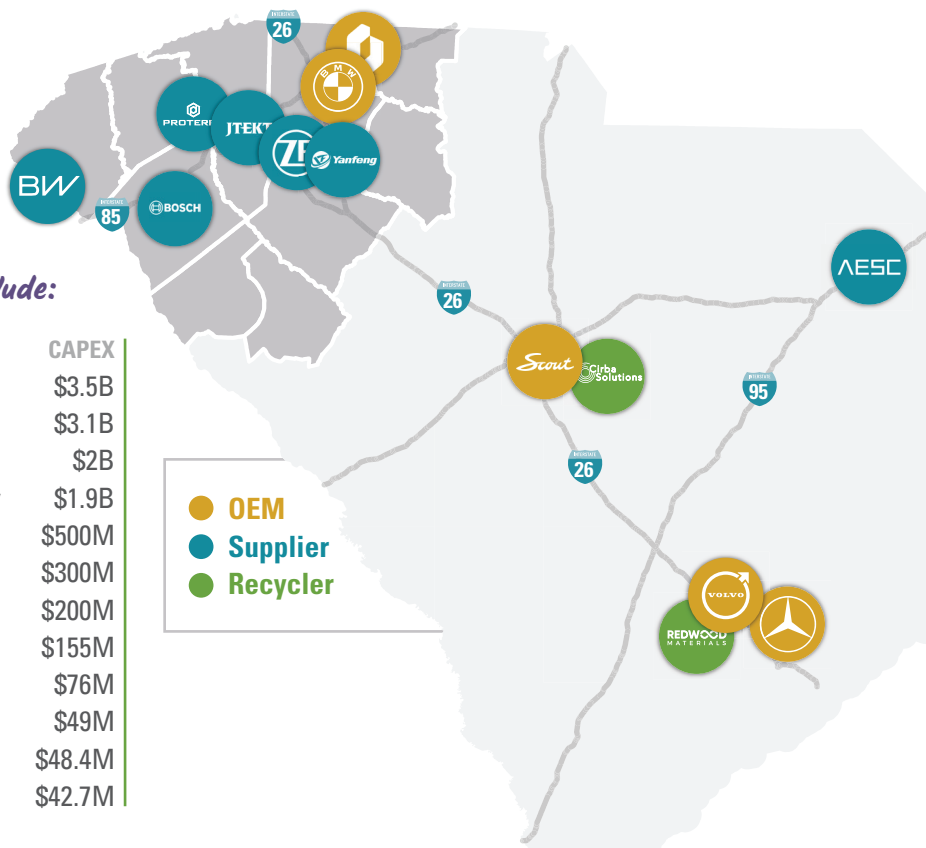


# CHARGING FORWARD IN SOUTH CAROLINA

Upstate SC has seen **\$4.2 billion in automotive investment in the Upstate over the last five years** as existing companies ramp up and new companies plug in.

*Recent statewide automotive announcements include:*

COMPANY	FOCUS	CAPEX
Redwood Materials	Battery Recycling	\$3.5B
AESC	Battery Production	\$3.1B
Scout	EV Trucks & SUVs	\$2B
BMW Manufacturing Corp.	EV SUV & Battery Assembly	\$1.9B
ZF	ICE & EV Transmissions	\$500M
Cirba Solutions	Battery Recycling	\$300M
Bosch	Hydrogen Fuel Cells	\$200M
Oshkosh Defense	U.S. Mail Delivery Vehicles	\$155M
Yanfeng	Interior Components	\$76M
Proterra	Battery Production	\$49M
JTEKT	Driveline Components	\$48.4M
BorgWarner	Battery Production	\$42.7M



## POWERING MOBILITY INNOVATION

### CLEMSON UNIVERSITY INTERNATIONAL CENTER FOR AUTOMOTIVE RESEARCH



Cutting-edge mobility technologies and the next generation of engineers are emerging from this 250-acre collaborative research park, home to Clemson's Department of Automotive Engineering.



CU-ICAR has awarded **900+ Masters degrees and 100+ Doctoral degrees**, and has established an **Undergraduate program with a focus on EV and autonomy**.



**And with 67% of research sponsored by industry**, Clemson minds are creating advancements in composite materials, advanced propulsion, connected autonomous systems, and battery materials, manufacturing, management and integration.

### COLLABORATIVE RESEARCH: REVVED



"Revolutionizing Electric Vehicle Education" through evidence-based research to investigate integration of virtual and augmented reality systems to support **electric vehicle manufacturing and education**.

#### Industry Partners



DAIMLER



MICHELIN



PROTERRA



VOLVO

#### Education Partners



Greenville  
TECHNICAL COLLEGE



SPARTANBURG  
Community College



TRIDENT  
TECHNICAL COLLEGE

### INTERNATIONAL TRANSPORTATION INNOVATION CENTER (ITIC)

The Southeast's premier mobility testing ground, iTiC is a nonprofit facility where OEMs, suppliers, researchers and startups can test and validate mobility solutions.



1-mile asphalt  
straightaway



1,700-foot  
durability track



Fast charging  
for EVs



3-mile highway  
speed oval

## CONNECT WITH US

[upstateSCalliance.com](http://upstateSCalliance.com)



UpstateSCalliance  
Business moves here.